

TEMPLE BETH OR
BRICK, NJ
The Vine



December 2020
14 Kislev-16 Tevet 5781

Hello December!



Inside this Issue

President's Message	Page 3
Rabbi's Message	Page 4
Sisterhood	Page 5
Men's Club, Youth Group &	Page 6
Yahrtzeit Donations	Page 7
Bingo	Page 9
Adult Jewish Learning	Page 10
Chanukah in Paris	Page 11
Brick Township Chanukah	Page 12
Community of Caring Event	Page 13
ShopRite Gift Cards Flier	Page 14



Temple Beth Or The Vine



SPIRITUAL LEADERS

Rabbi Robert Rubin Rabbi Emeritus Dr. Robert E. Fierstien

Temple Beth Or

200 Van Zile Road
Brick, NJ 08724

Phone: 732-458-4700

Fax: 732-458-7781

Office Hours

Monday - Friday
9:00 am - 1:00 pm

Secretary: Cindy

Email: TempleBethOrBrick@gmail.com

Website: www.TempleBethOrBrick.org

Facebook:

www.facebook.com/TempleBethOrBrickNJ

In case of an emergency

Contact Rabbi Rubin
call 610-639-5341 or 732-840-1092

Rabbi Rubin's Email:

RBobRubin@gmail.com

TEMPLE BETH OR OFFICERS

President	Sandi Silber	732-262-3010	ssilbertbo@gmail.com
1st Vice President	Mona Sternbach	732-840-2098	mtsternytbo@gmail.com
2nd Vice President	Abe Karron	914-960-9213	abkarron@gmail.com
3rd Vice President	Anne Katz	732-657-0756	anneark@msn.com
Financial Secretary	Rachel Zycband	732-581-4809	rachelzycband@comcast.net
Recording Secretary	Dr. Sharon Monter	732-255-2913	simdpm@aol.com
Treasurer	Dr. Spencer Hoffman	732-547-4510	spencerhoffmanmsdc@gmail.com

SERVICES



TBO Services on Zoom – Join us 15 minutes before the service and schmooze together.

Watch your email or contact the office for the Zoom Access.

All Submissions for The Vine are due
by the 15th of the prior month.
All Submissions are subject for review.

NO EXCEPTIONS

A MESSAGE FROM THE PRESIDENT



By Sandi Silber

Thanksgiving is behind us. Unfortunately, the COVID virus is still with us. Due to the virus, Temple Beth Or will hold services remotely. This is sad but necessary to keep the congregation healthy. It is our hope that we all stay well to join us in our new location.

An update on the status of the building and our move will go out as soon as contracts are signed. We are looking for volunteers to help pack the building. Please watch the emails for times and help us move forward.

We are all looking forward to Chanukah, the holiday that celebrates freedom and dedication. The history of our people has always sought freedom, we are asking that you stay dedicated to Temple Beth Or in its transition.

Join us on December 12, for "Chanukah in Paris". We will light our chanukias together and take a virtual walking tour of Paris with our French guide. We can try French Chanukah favorites in our homes or, in my case, latkes. Together we can celebrate this joyous holiday safely.

The Men's Club sent everyone a box of Chanukah candles. Included in the package were three candles and a list of Havdalah instructions. Join us on January 5th when the Sisterhood will sponsor a program to learn about Havdalah and assemble a Havdalah kit if you have not done so already. All congregants are invited to join us for the program and Havdalah service with the Rabbi.

Happy Chanukah, stay well and keep up with our emails.





A MESSAGE FROM OUR RABBI

By Rabbi Robert Rubin

Chanukah – Light at a Time of Darkness

Chanukah is known as the Festival of Lights. Clearly, lighting Chanukah candles (or oil wicks) is a central part of the celebration.

Going from one candle on the first night (separate from the shamash worker candle) up to eight lights on the last night (following the ancient rabbinic opinion of the School of Hillel) we increase the light as the holiday progresses. As the Talmud states: We should go up in holiness and not down.

This Festival of Lights comes in the season (in the Northern Hemisphere) in which the days are shortest and the nights longest – a season in which there is maximal darkness and minimal light. The Chanukah lights remind us that in the depth of the darkness, light can grow and shine forth.

This year, we are engulfed in much darkness – social tensions arising from racism and antisemitism, political tensions when a smooth transition of presidential power is required, and, of course, medical crises from the COVID-19 pandemic. Darkness can overwhelm us.

To our rescue comes Chanukah with its messages of light, hope, freedom, perseverance, dedication and celebration. The oil lasted longer than anyone thought – the Jewish people have survived longer than our enemies wanted. The Maccabees fought against difficult challenges – we can face our difficult challenges. Miracles happened that helped us in the past – we publicize and celebrate those miracles as we strive to help make miracles happen today.

An ancient proverb attributed to the Chinese and adopted by a group called The Christophers states: “It is better to light one candle than to curse the darkness.” Remember that the light of one candle dispels much darkness.

May this Chanukah (as stated in Esther 8:16 in the context of Purim and repeated on Saturday night during Havdalah) bring light, joy, gladness and honor and push away the darkness.

Chag Urim Sameach – Happy Festival of Lights!



Temple Beth Or The Vine

SISTERHOOD NEWS AND EVENTS

President: Marlene Vogel

"Help one another is part of
the religion of our sisterhood"
Louisa May Alcott

Sisterhood General Meeting for Chanukah: December 1st at 7:30 on Zoom.

Jay Burke will be playing the piano and we will light the menorah.
We will announce our winner of the Chanukah decoration contest.
Enjoy your own snacks at this Zoom event.

Sisterhood General Meeting January 5, 2021

Havdalah: How to put your Havdalah kit
together and what it means.

Cakeless Cake Sale. Watch your mail for
our Annual Cakeless Cake Sale, which will be
under way soon.



GOLDEN BOOKS

Send someone special a card for any
occasion. Call the office
732-458-4700 or
email: templebethor-
brick@gmail.com.

The cost is \$3.00 per card, including
postage, or purchase a package of six
cards for \$18.00.

Please make checks out to:
Sisterhood, Temple Beth Or
attn: Golden Book.

SHOPRITE GIFT CERTIFICATES

Buy supermarket gift cards from
Sisterhood Temple Beth Or and earn
5% on your purchase for the Temple.
ShopRite Gift Cards are available in
denominations of \$25, \$50, and
\$100. The cards are used as a debit
card when you do your shopping. It
is a convenient way to pay for your
shopping while
helping Temple Beth Or.

Please Call:
Johanna Hann at 848-333-8472

SISTERHOOD/TEMPLE CATERING

Sponsor an Oneg Shabbat, Kiddush
Luncheon, or Private Event!
All Bookings must be made through
Sisterhood/Temple Catering.
Please call Temple Beth Or office:
732-458-4700

FLOWER FUND

Contributions are being accepted for the
on going flower fund. A card will be sent
"In Honor of", "In Celebration of",
"In Memory of", or Just Because.
Contact the Temple's office



CHAI CHAIR FUND

The Chai chair Fund has
been established to replace
those chairs that are in dis-
repair and to purchase
additional ones.

Checks are payable to:
Sisterhood Temple Beth Or
(Attn: Ann Metnick)
In the amount of
\$18.00 per chair.

A certificate of notification
will be sent upon request.

Name:

Number of Chairs:

Amount Enclosed \$:

In Honor of:

In Memory of:

Temple Beth Or The Vine

MEN'S CLUB OF TEMPLE BETH OR

Presidents: Jeff Fink & Larry Kalb

Meeting Dates:

Sunday, December 20, 2020, 10 a.m.

(Watch for the details in the weekly emails.)



UPCOMING YOUTH EVENTS

Friday December 18, 2020 at 6:00 p.m. on ZOOM

TRICK USY: Shabbat Youth Service



Unfortunately all Hagalil in-person activities have been canceled.

There are virtual events planned. If you would like further information, please contact the office.

UPCOMING TEMPLE EVENTS *Save the dates – Chanukah is coming!*

Saturday, December 12, 2020 at 6:30 p.m. on ZOOM

Chanukah in Paris:

Register by **12/8/2020** – paid reservations required

Flier on page 11

Tuesday, December 15, 2020 @ 5:30 PM – Chanukah celebration at Brick Township Municipal Building

Flier on page 12

Thursday December 17, 2020 @ 7:30 p.m. - Jewish Federation Community of Caring Event

Register by **12/1/2020**

Flier on page 13

MAZAL TOV

Yasher Koach to **Sara Askin** and **Mona Sternbach** for

being honored by the Jewish Federation of Ocean County for their work of loving-kindness with our Mitzvah Group over the years.

See the community flier on page 13.

THANK YOU

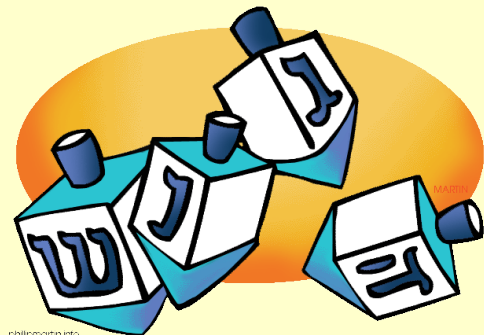
TRICK USY would like to thank all who participated and donated to the Challah Bake.

Temple Beth Or would like to say **Thank you** to the following members for their help over time:

Susan Lesser Greenberg with Facebook,

Debbie Alpert with TBO's website and

Ruth Fierstien with the Sisterhood Book Club.



YAHRTZEIT DONATIONS

The human soul is a light from God.
May it be Your will that the soul of our loved ones
enjoy eternal life, along with the souls of
Abraham, Isaac, and Jacob, Sarah, Rebecca,
Rachel, and Leah, and the rest of
the righteous that are in Gan Eden.
Amen.



IN LOVING MEMORY OF:

Sylvia Cirilis	Beloved mother of Bobbie Kanfer
Samuel Grossman	Beloved father of Sandi Silber
Morris & Nettie Tron, Abraham & Mae Toroker	Beloved parents of Larry & Elly Tron
Harry Rubin	Beloved uncle of Sara Askin
Abraham Kleinfeld	Beloved father of Hilde Harper
Helen Kleinfeld	Beloved mother of Hilde Harper
William Lubliner	Beloved father-in-law of Adrienne Lubliner
Samuel Lubliner	Beloved husband of Adrienne Lubliner
Phillip Lubliner	Beloved brother-in-law of Adrienne Lubliner
Dr. Marvin Seltzer DDS	Beloved husband of Rose Seltzer
Israel Ravitz	Beloved father-in-law of Lori Ravitz
Samuel Nagler	Beloved grandfather of Ruth Sherman Ress
Rebecca Balin	Beloved mother of Linda Balin

Temple Beth Or The Vine

MISHEBERACH PRAYER

When someone near and dear to us is ill, a spiritual uplift can be very meaningful. This is done in Jewish tradition by reciting a "Misheberach" prayer on the days we take out the Torah.

If you would like a Misheberach said and are not able to attend the service, please call Temple Beth Or office or email us.

We need the person's Hebrew name and the mother's Hebrew name, so that a prayer will be done for you.



MISHEBERACH PRAYER REQUEST

Date:

Person Receiving Prayer:

Hebrew Name:

Reason:

From:

THE MITZVAH GROUP

Temple Beth Or's Mitzvah Group reaches out to all members. If you know of someone who needs or would like a phone call, hospital, nursing or rehab center visit, please let us know.

Kindly complete the form below and mail it to the synagogue.

Temple Beth Or
Attention: The Mitzvah Group
200 Van Zile Road
Brick, New Jersey 08724

If time is of the essence, please phone the information to either:
Rabbi Rubin at 610-639-5341, or to
Mona Sternbach at 848-333-3596.

You can email Mona Sternbach at mtsternytbo@gmail.com.

Let us join together in turning our good intentions into good deeds.

Thank you,
B' Shalom
Mona Sternbach
Chairperson

PLEASE COMPLETE THIS FORM FOR REQUEST

Name of person wanting contact:

Phone:

Address:

Town:

Type of contact wanted-Please circle choice:

Phone Call

In Home Visit

Hospital Visit

Name of Hospital:

Town:

Nursing & Rehab Center Visit

Name of Center and Town:

Your name, if different than above:



Bingo will be closed until further notice
due to the Governor's update on
indoor gatherings.



**We will need volunteers for when we do open.
Thank you for making our Bingo game a success!**

Adult Jewish Learning Classes



We invite you to join our Zoom Adult Jewish Learning classes even if you have not participated before. We are open to your ideas for future classes. Contact Rabbi Rubin at 732-840-1092 (home) or 610-639-5341 (cell) with your input.



On the mountain, God gave Moses rules for the people to follow.

Chanukah in Paris

Visit Paris while Celebrating Chanukah at Home

Saturday Night, December 12

6:30-7:00 PM – **Light Chanukah candles** for the third night of Chanukah each in our homes while on Zoom, sing songs and eat refreshments

7:00-8:30 PM – **Jewish Walking Tour of Paris** online with experienced tour guide Karen Reb Rudel of Sight Seeker's Delight

Envision yourself in Paris as Karen shares unique photographs and interesting and amusing anecdotes at stops along the tour; includes Q&A.

Enjoy the Holiday of Lights while touring the City of Lights!



In preparation for the tour, every registrant will receive a suggested menu of French foods with recipes and other fun ideas to enhance your tour experience.

To access the tour, you will receive a Zoom link.

General admission – \$10 per Zoom access

Sponsor – \$36 (helps Temple Beth Or provide even more programs)

The cost of this program has been covered by an anonymous donation so that all proceeds benefit Temple Beth Or.

Paid registration required by Tuesday, December 8.

Return this form with payment to Temple Beth Or, 200 Van Zile Road, Brick, NJ 08724 by December 8.

I / We want to participate in the Chanukah in Paris event on December 12.

Name(s): _____

Email address: _____

___ General Admission \$10

___ Sponsor \$36

Amount enclosed: \$ _____

Chanukah Celebration

Tuesday, December 15

for the 6th Night of Chanukah

*5:30 PM, outside on the lawn
near the Parking Lot at the
Brick Township Municipal Hall,
401 Chambers Bridge Road
for a celebration with the Mayor*





Community of Caring Event

Thursday • December 17, 2020 • 7:30pm

Join us to celebrate the last night of Chanukah, the end of the year and new beginnings, and honor our Community of Caring heroes.



Honoring Community of Caring Heroes

Sara Askin
Phil Brilliant

Lenore Forsted
Melanie Giudice

Elinor Goldberg
Bill Langweil

Debby Milboer
Dr. Max Scheer

Mona Sternbach
Jack Weber

Sign on as a Sponsor!

Register at www.jewishoceancounty.org/communitycaring

Sponsor Levels

Gold Sponsor – \$1800
Full Page Ad in Ocean JPages

Silver Sponsor – \$1000
½ Page Ad in Ocean JPages

Bronze Sponsor – \$540
¼ Page Ad in Ocean JPages

Patron Sponsor – \$360
¼ Page Ad in Ocean JPages

Contributor – \$54
1 Line Message to Honorees

» Ocean JPages deadline
is December 1, 2020.



Purchase your ShopRite Gift Cards at Temple Beth Or !!

Purchase your needs for Holiday Dinners
or to Make a Great Gift

Cards are available in \$25, \$50 or \$100.

5% of gift cards purchased goes to Temple Beth Or
at no extra cost to you.



Call the Temple office at
732-458-4700
or email us at
Templebethorbrick@gmail.com



Please give **us 24 hours notice** so we can have them ready for you to pick up, or we can also mail them to you if you are unable to get here to pick them up.

**Please Assist our fundraising efforts.
Support Temple Beth Or!**



Temple Beth Or The Vine

PRAYER BOOK DEDICATION

Shabbat/Festival Siddur – only a few remaining to dedicate

Weekday Siddur – only a few remaining to dedicate

High Holiday Machzor

Consider dedicating one or more books.

Dedication Prices:

1) Sim Shalom Shabbat/Festival Prayerbook: \$36 each

2) Sim Shalom Weekday Prayerbook: \$36

3) High Holiday Prayerbook Silverman Machzor: \$25

Please indicate your choice of dedication(s) and list the dedication inscription(s), such as “in honor of” or “in memory of,” along with the donor name(s) as they are to be listed in the dedications. A special page to list your dedications is available for your convenience.

Name(s) of person(s) submitting this form:

Address:

Telephone Number:

TOTAL ENCLOSED: \$



Return with payment to
Temple Beth Or, 200 Van Zile Road,
Brick, NJ 08724.

Questions? Contact Temple Beth Or
at 732-458-4700 or
templebethorbrick@gmail.com.
Your donation goes directly to
Temple Beth Or.
Thank you.

For EACH book dedicated, please complete the following.

1. **[circle one]** Book to be Dedicated: Shabbat/Festivals Weekdays High Holiday
 [circle one] Type of Dedication: in honor of in memory of
 [print] Name (s) (as to be listed in the book dedication plate):

 [print] Donor Name (s) (as to be listed in the book dedication plate):

2. **[circle one]** Book to be Dedicated: Shabbat/Festivals Weekdays High Holiday
 [circle one] Type of Dedication: in honor of in memory of
 [print] Name (s) (as to be listed in the book dedication plate):

 [print] Donor Name (s) (as to be listed in the book dedication plate):

3. **[circle one]** Book to be Dedicated: Shabbat/Festivals Weekdays High Holiday
 [circle one] Type of Dedication: in honor of in memory of
 [print] Name (s) (as to be listed in the book dedication plate):

 [print] Donor Name (s) (as to be listed in the book dedication plate):

4. **[circle one]** Book to be Dedicated: Shabbat/Festivals Weekdays High Holiday
 [circle one] Type of Dedication: in honor of in memory of
 [print] Name (s) (as to be listed in the book dedication plate):

 [print] Donor Name (s) (as to be listed in the book dedication plate):

Ways To Give

Celebrate a Simcha, commemorate a loss,
mark a special occasion, or offer a get well.

Strengthen our synagogue by contributing to the General Fund or any of the specific funds indicated below. You can send your check to the Synagogue office specifying the fund you would like to support. A beautiful card will be sent from TBO informing the honorees of the gift you have made in their honor or in memory of a loved one.

General Fund	Discretionary
Oneg Sponsorship	\$100. & up
Kiddish Sponsorship	\$450. & up
Lifetime Pew Seat	\$500.

Sisterhood Fund

Golden Books	\$3.00/each
Flower Fund	Discretionary
Chai Chair Fund	\$18.00

Sim Shalom Prayer Book	\$36.00
High Holiday Prayer Book	\$25.00
Rabbi Discretionary Fund	Discretionary
Aliyah Fund	Discretionary
Misheberach Fund	Discretionary



Plaques

Memorial Plaques	\$350.00/member	\$450.00/non-member
-------------------------	-----------------	---------------------

Memorial Board (includes 2 plaques): Inquire about cost

Wall of Life Plaques

1" x 3"	\$100.00
2" x 3"	\$300.00
3" x 3"	\$750.00
2" x 6"	\$1000.00

You may send or bring a check to the synagogue office. Tributes cannot be officially acknowledged until payment is received. Please contact the office for information regarding Legacy Gifts and opportunities to make larger contributions.

LIFE CYCLE EVENTS

Temple Beth Or is here for you to share your happy occasions, as well as any sad difficult moments, with others and with our community. We appreciate the following donations to help keep Temple Beth Or open and functioning. For the "member" rates, the person or the person's parent/guardian must be a member of TBO or by an extension of reciprocity, of another congregation. Payment is to be made payable to Temple Beth Or. The arrangements for all of these ceremonies and dates must be approved by the Rabbi and TBO.

BAR/BAT MITZVAH FEE

Includes the option of choosing honorees at the service.

TBO Members - \$875.00

There is no additional charge for the lessons with the Rabbi. If the event is held as part of the Saturday morning Shabbat service, it is expected that the Saturday Kiddush and the Friday night Oneg Shabbat receptions will be sponsored in honor of the occasion (included in the above fee).

AUFRUF TORAH ALIYAH

Includes the option of choosing honorees at the service.

TBO Members - \$100.00

Non-Members - \$150.00

If the event is held as part of the Saturday morning Shabbat service, it is expected that the Kiddush following the service will be sponsored in honor of the occasion.

WEDDING

does not include a Chuppah.

The Rabbi does not have to be the officiate.

TBO Members - \$200.00

Non-members - \$300.00

BABY NAMING TORAH ALIYAH

Includes the option of choosing honorees at the service

TBO Members - \$100.00

Non-members - \$150.00

If the event is held as part of the Saturday morning Shabbat service, it is expected that the Kiddush following the service will be sponsored in honor of the occasion.

FUNERAL

(use of Sanctuary)

The Rabbi does not have to be the officiate.

TBO Members - No Charge

For a Kaddish relative of a TBO Member (parent, spouse, sibling, child) - No Charge

For a Non-member - \$550.00 (to be billed to the funeral director)

Following the funeral, if appropriate, a surviving relative is to be offered a one year courtesy membership or a \$550 credit to a higher priced membership with the welcome invitation to come here to attend services and to say Kaddish.

KADDISH RECITATION

A TBO member or a Kaddish relative of a TBO member who dies is to be remembered and automatically placed on the 11-month Mourner's List which is read at the time of the recitation of the Mourner's Kaddish at the end of Shabbat services on Friday nights and Saturday mornings. There is no required donation for this.

A request may be made to add a non-member to the Mourner's List and have them remembered and included at the time of the recitation of the Mourner's Kaddish at the end of Shabbat services on Friday nights and Saturday mornings.

A \$300.00 donation is requested for this.