



TEMPLE BETH OR



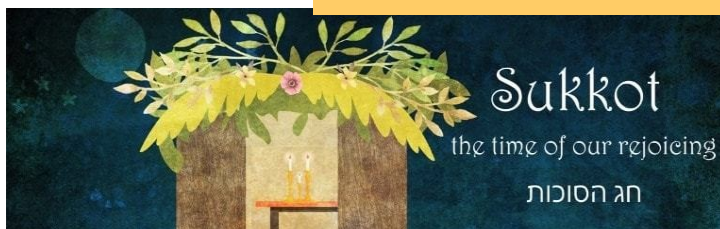
September & October 2022
5 Elul 5782 - 6 Heshvan 5783

THE VINE

SEPTEMBER

&

OCTOBER



Sukkot

the time of our rejoicing

חג הסוכות



Shemini Atzeret
and
Simchat Torah

The Newsletter of
TEMPLE BETH OR
BRICK, NJ



Yom Kippur



Rosh Hashana

Temple Beth Or
(Hebrew for "House of Light")

Temple Beth Or is an egalitarian inclusive Conservative congregation, modern yet reverent to the Jewish tradition. The congregation is made up of singles, couples and families. We welcome all members of our community, including interfaith families, and feel that a congregation should be a friendly welcoming place and the anchor of a caring community. It reaches out to its members relating to their needs and interests and to the larger Jewish and general community as well. Temple Beth Or is affiliated with the United Synagogue of Conservative Judaism.

SPIRITUAL LEADERS

Rabbi Robert Rubin
Rabbi Emeritus Dr. Robert E. Fierstien



SERVICES: In-Person or on Zoom

Monday-Thursday on Zoom only.
Time varies during the months of
September & October

Friday @ 7:15 PM
Saturday @ 9:30 AM (beginning with
Shocheyn Ad, Preliminary Services on
your own) and after Shabbat with
Havdalah

TBO Services available on Zoom
Join us 15 minutes before the service
and schmooze together.

Watch your email or contact the office for the
Zoom Access.

If you have difficulty going online,
contact Rabbi Rubin at 610-639-5341.

We look forward to seeing you!

**Temple Beth Or
MAILING ADDRESS**

**PO Box 789
Brick, NJ 08723**

Phone: 732-458-4700

TBO Office Location @
St. Thomas Lutheran Church,
135 Salmon Street, Brick

Office Hours

Monday - Friday
9:00 am - 1:00 pm

Call from parking lot to be met at door.
Secretary: Cindy

Email: TempleBethOrBrick@gmail.com

Website: www.TempleBethOrBrick.org

Facebook:
www.facebook.com/TempleBethOrBrickNJ

In case of an emergency

Contact Rabbi Rubin
call 610-639-5341 or 732-840-1092

Rabbi Rubin's Email:
RBobRubin@gmail.com

TEMPLE BETH OR OFFICERS & DIRECTORS

| | | | |
|----------------------------|---------------------|--------------|--|
| President | Sandi Silber | 732-262-3010 | ssilbertbo@gmail.com |
| 1st Vice President | Jeff Fink | 732-673-5356 | jfink@keyportarmynavy.com |
| 2nd Vice President | Abe Karron | 914-960-9213 | abkarron@gmail.com |
| 3rd Vice President | Mona Sternbach | 732-840-2098 | mtsternytbo@gmail.com |
| Financial Secretary | Rachel Zycband | 732-581-4809 | rachelzycband@comcast.net |
| Recording Secretary | Dr. Sharon Monter | 732-255-2913 | simdpm@aol.com |
| Treasurer | Dr. Spencer Hoffman | 732-547-4510 | spencerhoffmanmsdc@gmail.com |

| | | |
|---|-------------------------|-------------------------|
| Directors 2 Year Terms | <u>2022-2024</u> | <u>2021-2023</u> |
| | Jay Burke | Sara Askin |
| | Anne Katz | Lenny Erlanger |
| | Naomi Monter | Larry Kalb |
| | Harriet Riss | Marlene Vogel |

If a link is broken, the whole chain breaks. Yiddish Proverb



Inside this Issue

| | |
|---|--------------------------|
| President's Message | Page 5 |
| Rabbi's Message | Page 6 - 8 |
| Sisterhood | Page 9 & 10 |
| Men's Club, Youth Group, Jewish Learning | Page 11 |
| Upcoming News & Events | Pages 12 - 14 |
| TBO High Holiday Services Schedule | Page 15 |
| Cans for Kol Nidre flier | Page 16 |
| Pizza in the Hut Flier | Page 17 |
| Selichot Service & Program Flier | Page 18 |
| Birthday List | Page 19 |
| Yahrtzeit & Yizkor Donations | Pages 20 & 21 |
| Misheberach Prayer Form & The Mitzvah Group Form | Page 22 |
| Trees for Israel Form | Page 23 |
| ShopRite Gift Cards Flier | Page 24 |
| Ways to Give | Page 25 |
| Life Cycle Events | Page 26 |
| Puzzle | Pages 27 |

FALL



**Make new friends, but
don't forget the old ones.**

Yiddish Proverb

All Submissions for The Vine are due by
the 15th of the prior month.

All Submissions are subject for review.

NO EXCEPTIONS

A MESSAGE FROM THE PRESIDENT



By Sandi Silber

As we have entered the month of Elul we are preparing for the High Holidays at the end of the month. The High Holiday packets have been sent out to the congregation and you should be receiving them soon. The venue for the holidays is air conditioned and large enough for us to spread out. If you know of anyone who wants to join us, family or friends, please call TBO's office or have them call.

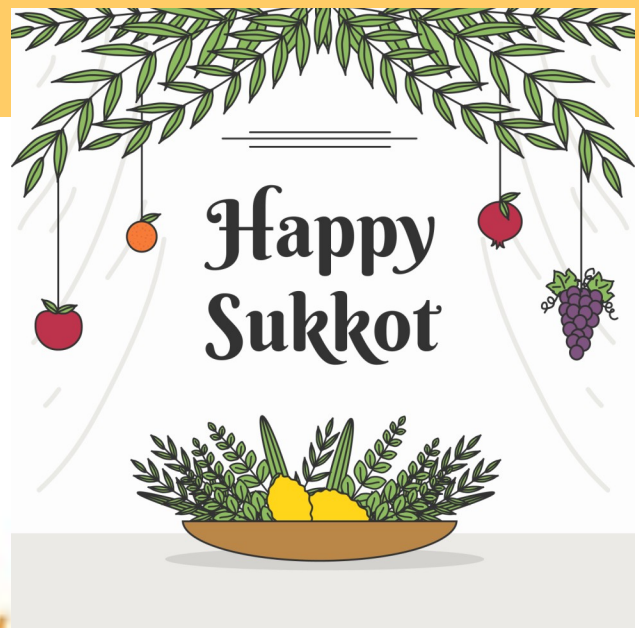
The status of the new building is moving along. The new hearing will take place on September 14 at 7pm. Our lawyer and engineer are optimistic and so am I. If anyone would like to come to the hearing to show support, please sit on the left side so that we will all be together.

Temple Beth Or's various committees are working hard to keep everybody involved. Please continue to read the emails and join us for services and special events.

The Strategic Planning Committee and TBO's Board are working hard to keep a Jewish presence in Brick Township. We need the support of our congregation to keep us going by joining us for services and events and financially backing us.

This message is for both September and October as the holidays keep everyone very busy. Pizza in the Hut this year will be October 12 at Rabbi & Susan's Sukkah in their backyard. The flier with details is on page 17.

Shana Tova to all of Temple Beth Or's congregation. May this year bring everyone a happy and healthy year and the opening of our new home.



A MESSAGE FROM OUR RABBI

By Rabbi Robert Rubin



New Year – New Elections for Israel's Knesset

If you are not clear on all the steps in Israel's election system – as the country approaches Election Day on November 1 – then this article is for you. If you are very familiar with how Israel's election system works, you may find this article helpful in explaining it to others. Feel free to copy it and share it.

Israel is a democracy. It is a robust democracy with many opinions expressed on many issues, and it is important to understand Israel's democracy and how it functions, particularly at this time.

The election process in Israel is based on a parliamentary system that is used in many countries around the world. (The U.S. does not have a parliamentary system; it has a representative system, in which people are elected from within specified districts – local districts for the House of Representatives and states for the Senate.)

Here are the basic steps of an Israeli national election. As you will see, when Israel's Election Day is over, the actual process of forming a government is only just beginning.

- 1) There are 120 seats in the Knesset. There are no districts. The national election is for all 120 seats.
- 2) Before the Knesset election, each Party submits a list of individuals in a numbered sequence and runs that list in the election. The higher up on the list, the safer that slot is to becoming a Knesset Member (see No. 5).
- 3) Each individual voter gets one vote to select one party and its list from the various parties that are running. There are usually 25-35 parties running in the election.
- 4) Each party receives a percentage of the Knesset seats based on the percentage of the votes received. Fractions of seats are worked out through various calculations, and sometimes through agreements between parties to share excess votes. There is a qualifying threshold of 3.25% of the national vote that a party needs to exceed in order to receive any seats in the Knesset at all. This qualifying threshold means that the smallest list of a Knesset party is four seats.
- 5) An individual listed on their party's election list gets "elected" to serve in the Knesset (receives one of the 120 Knesset seats) based on how many seats his or her party wins: if a party wins 20 seats, then the first 20 individuals listed on the list becomes members of Knesset; if a party wins only 10 seats, then only the first 10 receive a Knesset seat; and so on until all 120 seats are assigned according to the percentage of vote totals for each individual party.
After an election, if a Knesset member should pass away or resign, the next person on that Knesset member's party list – who did not make it into the Knesset in the election itself – moves up and becomes a Knesset member.
- 6) A ruling majority needs to be formed of 61 Knesset members. Since the first election in 1949, no one party has ever won a majority of 61 or more Knesset seats. Thus, without a one-party majority, a coalition of parties needs to be formed that adds up to a majority of at least 61.

Continued on page 7

Continued from page 6

7) Following the calculation and distribution of the Knesset seats, the president of Israel – mostly an honorary figurehead but with this one important political responsibility – meets with delegations of the parties that were successfully elected into the Knesset and charges the leader of one of the parties with the assignment of forming a majority coalition with four weeks to do so. Who does the president choose for this challenge? The President can choose any party leader, presumably the one who is thought to have the best possibility of success, often – but not always – the leader of the party with the most votes or seats.

8) Discussions and negotiations take place between various parties. If the party leader chosen by the president is successful in forming a majority coalition, then the proposed governing coalition is presented for acceptance. If that party leader is not successful, the president can grant an extension of another two weeks or can choose another party leader to attempt to form a majority coalition with four weeks to do so. If the second party leader chosen by the president is successful in forming a majority coalition, then the proposed governing coalition is presented for acceptance. If attempts to form a majority coalition are not successful, a new election can be called, and the entire election cycle would begin again.

Who will lead the next government? The answer will be determined with a process that begins on November 1.

Israel's Knesset Election – A Hypothetical Example

Votes cast = 4,000,000

3.25% qualifying threshold to get into Knesset altogether = 130,000 votes

Ten parties run in the election. In Israel, there are often 25-35 parties that run in an Israeli election, but only ten parties are listed here as an example of the overall process.

Results of Votes Received

Party A = 940,000

Party B = 770,000

Party C = 680,000

Party D = 540,000

Party E = 440,000

Party F = 320,000

Party G = 150,000

Party H = 90,000

Party I = 55,000

Party J = 15,000

Results for Knesset Seats – Calculation Phase

Three parties (H, I and J) did not make it over the qualifying threshold at all. Their combined vote total was 160,000. The remaining seven parties now receive Knesset seats based on their percentages of the remaining votes (3,840,000). For the seven parties that did pass the 3.25% qualifying threshold, a Knesset seat is earned for every 32,000 votes (1/120th of the total) that they received.

Continued on page 8

Continued from page 7

Results for Knesset Seats – Actual Totals

Party A = 940,000 = 24.48% = 29 seats

Party B = 770,000 = 20.05% = 24 seats

Party C = 680,000 = 17.71% = 21 seats

Party D = 540,000 = 14.06% = 17 seats

Party E = 440,000 = 11.46% = 14 seats

Party F = 320,000 = 8.33% = 10 seats

Party G = 150,000 = 3.91% = 5 seats

Forming the governing majority coalition follows a process described in No. 7 and No. 8 in the article.

Note: This article is being submitted to *The Jerusalem Report* (international) and to *The Jewish Journal* (Ocean County) for a wider distribution.



Temple Beth Or The Vine

SISTERHOOD NEWS AND EVENTS

President: Deanna Burke

"Help one another is part of
the religion of our sisterhood"
Louisa May Alcott

SAVE THE DATE:

September 6, 2022, Tuesday - Paid Up Meeting @ 7:30 PM.

"Let's play a game" with Rabbi Rubin.

Please pay your dues to be put in the drawing for a free Sisterhood membership for the following year.

RSVP to TBO Office 732-458-4700.



October 12, 2022, Wednesday - Pizza Party at Rabbi & Susan Rubin's Sukkah. See flier on page 17.

November 1, 2022, Tuesday - General Meeting

Any suggestions for future meeting topics or guest speakers, please contact me or the TBO Office.



GOLDEN BOOKS

Send someone special a card for any occasion. Call the office 732-458-4700 or email:

TempleBethOrBrick@gmail.com.

The cost is \$3.00 per card, including postage, or purchase a package of six cards for \$18.00.

Please make checks out to:
Temple Beth Or, Sisterhood
Attn: Golden Book.

SHOPRITE GIFT CERTIFICATES

Buy supermarket gift cards from Sisterhood Temple Beth Or and earn 5% on your purchase for the Temple. ShopRite Gift Cards are available in denominations of \$25, \$50, and \$100. The cards are used as a debit card when you do your shopping. It is a convenient way to pay for your shopping while helping Temple Beth Or.

Please Call:

Rachel Zycband @ 732-581-4809

SISTERHOOD/TEMPLE CATERING

Sponsor an Oneg Shabbat, Kiddush Luncheon, or Private Event!

All Bookings must be made through Sisterhood/Temple Catering.

Please call Temple Beth Or's office:
732-458-4700

FLOWER FUND

Contributions are being accepted for the on going flower fund. A card will be sent "In Honor of", "In Celebration of", "In Memory of", or Just Because. Contact Temple Beth Or's office



CHAI CHAIR FUND

The Chai chair Fund has been established to replace those chairs that are in dis-repair and to purchase additional ones.

Checks are payable to:
Temple Beth Or, Sisterhood
Attn: Ann Metnick
Amount TBD per chair

A certificate of notification will be sent upon request.

Name:

Number of Chairs:

Amount Enclosed \$:

In Honor of:

In Memory of:

Temple Beth Or The Vine



Sisterhood President Message

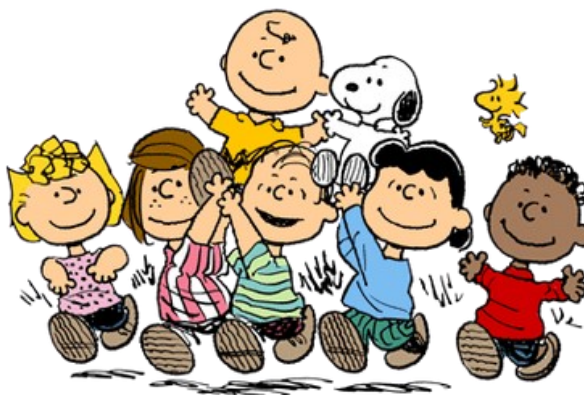
Hello Everyone,

I'm looking forward to starting our new season on September 6.

The past few years have been challenging for all of us. The scientists have done their part in fighting COVID-19 with vaccines to keep our bodies healthy. Now we have to do our part to keep our minds healthy. That will come by participation at our monthly meetings. If you are a member, please pay your dues. If you are not a member, please consider joining.

Wishing you a Happy, Healthy and Sweet New Year.

Deanna Burke
Sisterhood President



Temple Beth Or The Vine

MEN'S CLUB OF TEMPLE BETH OR

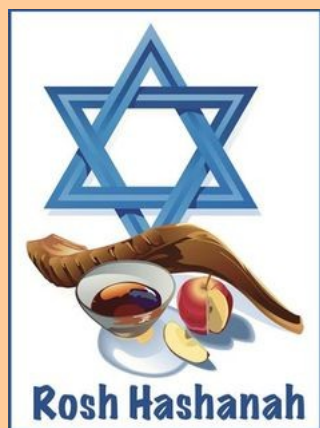
Co-Presidents: Jeff Fink & Larry Kalb

September 18, 2022 @ 10:00 AM - General Meeting.

Online through Zoom.



Join Men's Club 2022



UPCOMING YOUTH EVENTS



Adult Jewish Learning Classes



“High Holiday Prayers – Reading and Understanding Them” online through Zoom.

Thursdays, September 1, 8, 15, 22, and 29 @ 7:30-8:45 PM - Practice some Hebrew reading and discuss the meanings of certain High Holiday prayers with Rabbi Rubin. Each class is an independent session.

We invite you to join our Zoom Adult Jewish Learning classes even if you have not participated before.

We are open to your ideas for future classes.

Contact **Rabbi Rubin** at **732-840-1092 (home)** or **610-639-5341 (cell)** or

Mona Sternbach at **732-840-2098 (home)** with your input.



On the mountain, God gave Moses rules for the people to follow.



Save the Dates:

High Holiday services. TBO Board has approved the rental of the Banquet Room of the Laurelton Fire House on Route 88 across from The Home Depot for the High Holiday services. It is air conditioned and can easily be set up for our services. See page 15 for schedule.

September 2, 2022, Friday, @ 7:15 PM – Shabbat Service with a Guest Speaker from the Jewish Labor Committee on Zoom only.

September 5, 2022, Monday - Labor Day - TBO Office Closed

September 11, 2022, Sunday, @ 6:00 PM – 9/11 Commemoration at Windward Beach, Brick

October 12, 2022, Wednesday - Pizza in the Hut at Rabbi & Susan Rubin's Sukkah. See flier on page 17.

September 17, 2022, Community-wide Selichot @ 8:15 PM. The community is invited to attend a special Selichot event on Saturday, September 17, 8:15 PM. This event includes a program on "Judaism and Climate Change" (8:45 PM) and a special pre-Rosh Hashanah prayer service (9:45 PM) with rabbis and cantors participating from four local congregations – Beth Am Shalom (Lakewood), Congregation Ahavat Olam (Howell), Congregation B'nai Israel (Toms River) and Temple Beth Or (Brick). This year it is being held at Congregation Ahavat Olam, 106 Windeler Road, Howell. See flier on page 18.

September 19 - October 21, 2022, Cans for Kol Nidre collection. See flier on page 16.

September 26 & 27, 2022, Monday & Tuesday - Rosh Hashanah - TBO Office Closed - Happy New Year!

October 5, 2022, Wednesday - Yom Kippur - TBO Office Closed

October 10 & 11, 2022, Monday & Tuesday - Sukkot - TBO Office Closed

October 17, 2022, Monday - Shemini Atzeret - TBO Office Closed

October 18, 2022, Tuesday - Simchat Torah - TBO Office Closed





Emergency Campaign to help the Jews of Ukraine during this crisis – You can contribute through the Jewish Federation of Ocean County to help the Joint Distribution Committee and other agencies who are on the ground working in Ukraine. All contributions raised will be sent directly to our partners doing important work in response to this crisis. **Checks payable to JFOC can be mailed to 1235A Highway 70, Lakewood, NJ 08701; memo: Ukraine Emergency Fund.**



UPCOMING EVENTS

VOLUNTEER



Be Prepared – CERT is Community Emergency Response Team, a nationwide volunteer organization which most towns have. It backs up First Responders. Members are trained on what to do before, during and after a disaster, including basic first aid, CPR, fire safety, light search & rescue and triage. CERT members have assisted with evacuations, food & water distribution, fire and Super Storm Sandy as well as at township events, such as Summerfest, Night Against Crime and Trunk or Treat. When disaster strikes, those trained are able to assist the police and EMS, help themselves and help their neighbors. Successful completion of a CERT course, which includes a written & practical test and background check, are the requirements to become a CERT member. Preparedness is very important. Please stop in the Temple Beth Or office, located in St. Thomas Lutheran Church, Monday-Friday, 9:00 AM – 1:00 PM to pick up a Disaster Preparedness Guide. If you are at any township event look for the CERT table and say hello. If you want to learn more, call our TBO member Joy Witt at 732-278-9008.

VOLUNTEER



VOLUNTEERS NEEDED - for Friday night Oneg Shabbat & Saturday Kiddush. Volunteers needed to purchase food, set up and clean up. Contact Rachel at Rachelzycband@comcast.net or 732-581-4809 for more info.



DONATE

HELP SUPPORT PEOPLE THROUGH THE FOOD PANTRY at St. Thomas Lutheran Church (where our TBO office is located). The church continues to go above and beyond in kindness and generosity towards our congregation in helping us continue to move forward at this difficult time. Buy a ShopRite gift card (\$25, \$50 or \$100) from Sisterhood and donate it to the food pantry. Order by contacting Rachel Zycband at Rachelzycband@comcast.net, or (732-581-4809) and specify that it is to be given to the food pantry. Buying ShopRite gift cards from Sisterhood also benefits TBO.



DONATIONS OF NON-PERISHABLE FOOD for the Food Pantry – Bring food directly to a food pantry, such as the one at St. Thomas Lutheran Church, 135 Salmon Street, Brick, 732-477-5533.

AVAILABLE – The Jewish Journal (September & August issues), **Shabbat/Holiday Prayer Books, Weekday Prayer Books, Chumashim, Yizkor Books of Remembrance.** Available in the TBO Office or contact Rabbi Rubin (cell: 610-639-5341).



Help support Temple Beth Or with the purchase of ShopRite Gift Cards - See flier on page 24.



PLANT A TREE IN ISRAEL in a loved ones name. \$18 per tree. Temple Beth Or is working with the Jewish National Fund for this project. For more information contact TBO office or Rabbi Rubin (cell: 610-639-5341). Form on page 23.

COVID-19 Tests available – get free test kits at [COVIDtests.gov](https://www.covidtests.gov).



Give

Temple Beth Or High Holiday Services

2022 / 5783 Schedule and Page Numbers

in the Rabbi Morris Silverman Machzor (1998 Printing)

(starting times are set, ending times are approximate)

Sunday, September 25, afternoon – Erev Rosh Hashanah (Minchah) – on your own – pages x-xiv, 22

Sunday, September 25, 6:45-7:30 PM – Rosh Hashanah First Night (Maariv) – pages 1-25

Monday, September 26, – on your own – Rosh Hashanah First Day Preliminary Morning Service (Birkhot Hashachar, Pesukei D'zimra) – pages 26-59

Monday, September 26, 9:30 AM – 12:30 PM – Rosh Hashanah First Day Morning (Shacharit, Musaf, with the Blowing of the Shofar) – pages 60-178

Monday, September 26, 6:15-7:30 PM – Rosh Hashanah First Day Afternoon (Minchah)/Second Night (Maariv) – pages 179-189, 201-203 / 1-25

Tuesday, September 27, – on your own – Rosh Hashanah Second Day Preliminary Morning Service (Birkhot Hashachar, Pesukei D'zimra) – pages 26-59

Tuesday, September 27, 9:30 AM – 12:30 PM – Rosh Hashanah Second Day (Shacharit, Musaf, with the Blowing of the Shofar) – pages 60-178

Tuesday, September 27, 6:15-6:45 PM – Rosh Hashanah Second Day (Minchah) (Holiday ends at 7:30 PM)

Tuesday, October 4, – on your own – Erev Yom Kippur Afternoon (Minchah) – pages 191-203

Tuesday, October 4, 6:00-7:45 PM – Yom Kippur Evening (Kol Nidre, Maariv) – pages 204-254, 24

Wednesday, October 5, – on your own – Yom Kippur Preliminary Morning Service (Birkhot Hashachar, Pesukei D'zimra) – pages 26-59

Wednesday, October 5, 9:30 AM – 1:30 PM – Yom Kippur Morning (Shacharit, Musaf, with the Yizkor Memorial Service) – pages 255-403

Wednesday, October 5, 5:15-7:45 PM (Final Shofar at 7:20 PM) – Yom Kippur Afternoon/Evening (Minchah, Neilah, Shofar, Maariv, Havdalah) – pages 408-499, 24

Cans for Kol Nidre

Deposit
Non-Perishable
Kosher or Non-Kosher
food items at Temple Beth Or's office
(located at St. Thomas Lutheran Church)

starting Monday, September 19, 2022
until Friday, October 21, 2022
during TBO office hours or at Holiday Services

to Benefit The Food Pantry at St. Thomas Lutheran Church
for the Brick Community.

Sponsored by:
Sisterhood of Temple Beth Or

Ochel Nefesh (Food of the Soul) Project



Temple Beth Or The Vine



PIZZA IN THE HUT

Wednesday, October 12, 2022 at 4:00 - 6:00 PM

Home of Rabbi & Susan Rubin

230 Pello Road, Brick

Please come directly to the Sukkah in the backyard.

Please bring folding chairs if you have.

If cancelled due to weather-related issues we will contact those who have made a reservation.

Cost for dinner: \$5 per person

cash or check made out to

Sisterhood Temple Beth Or

Payment may be brought to event.

Reservations are required

**by Thursday, October 6, 2022 before
12:00 PM.**

Sponsored by: Sisterhood

*May your home be blessed with
happiness and joy!*



Temple Beth Or Sisterhood
P.O. Box 789
Brick, New Jersey 08723

For More Information or questions:

Phone: 732-458-4700

Email: TempleBethOrBrick@gmail.com

Name(s)

Phone

Amount Enclosed

Number of people

Begin the New Year season . . . Prepare ourselves spiritually

Join the larger Jewish community for an in-person

Selichot Service and Program

Cosponsored by

Beth Am Shalom of Lakewood

Congregation Ahavat Olam of Howell

Congregation B'nai Israel of Toms River

Temple Beth Or of Brick

Saturday, September 17, 8:15 PM

at Congregation Ahavat Olam, 106 Windeler Road, Howell

Reception and Havdalah

Socialize over light refreshments and
mark the separation of Shabbat from the coming week

Special Program at 8:45 PM

“Judaism and Climate Change”

Selichot Service at 9:45 PM

(until approximately 10:30 PM)

with the participation of our rabbis and hazzanim/cantors

Online access will also be provided.

Watch your email for the online access information.



SEPTEMBER & OCTOBER MEMBERS' BIRTHDAYS



*Wish them
a
Happy Birthday!*

September

- 13 Gittel Footerman**
15 Jay Burke
Jacob Peters
24 Naomi Monter

October

No birthdays listed.

*Send them
a
Card
or
Golden Book!*

HAPPY BIRTHDAY!!



The above birthday information is from the Temple Beth Or Calendar and also from information submitted individually.
If you would like to have your birthday listed in the Vine, please email or call with the month and day of your birthday to the TBO Office.



YAHRTZEIT DONATIONS

The human soul is a light from God.
May it be Your will that the soul of our loved ones
enjoy eternal life, along with the souls of
Abraham, Isaac, and Jacob, Sarah, Rebecca,
Rachel, and Leah, and the rest of
the righteous that are in Gan Eden.
Amen.



IN LOVING MEMORY OF:

Helen Wassner

Beloved mother of Marty Wassner

Marlin Geller

Beloved brother-in-law of Rosa Geller

Syma Yellin

Beloved mother of David Chaiken

June Harriet Tanenblatt

Beloved sister of Deanna Burke

Minnie Tanenblatt

Beloved mother of Deanna Burke

Irving Comac

Beloved father of Tema Goetzal

Dawn Rubin

Beloved mother of Rabbi Robert Rubin

Hannah Krilow

Beloved mother of Phyllis Rudnick

Abraham Krilow

Beloved father of Phyllis Rudnick

Paul Kravitz

Beloved father of Carole Wassner

Max Erlanger

Beloved father of Lenny Erlanger

Stanley Caris

Beloved brother of Sheldon Caris

Charles Brindell

Beloved uncle of Marlene & Adrienne Vogel

Theodore Burke

Beloved father of Jay Burke

Alexander Smith

Beloved father of Elaine Wain

Norman Ostrove

Beloved father of Robert Ostrove

Kenneth Grossman

Beloved brother of Sandi Silber

Eileen Levin

Beloved sister of Florence Schneider

John Lubowsky

Beloved father of Sue Bernstein

YAHRTZEIT DONATIONS

The human soul is a light from God.
 May it be Your will that the soul of our loved ones
 enjoy eternal life, along with the souls of
 Abraham, Isaac, and Jacob, Sarah, Rebecca,
 Rachel, and Leah, and the rest of
 the righteous that are in Gan Eden.
Amen.



IN LOVING MEMORY OF:

Nathan Bernstein

Beloved father of Jeff Bernstein

Rose Sternbach

Beloved mother of Edward Sternbach

Hadasa Smith

Beloved mother of Ruth Fierstien

Goetzel Feit

Beloved uncle of Ruth Fierstien

Stan Caris

Beloved father of Scott & Jill Caris

Dr. Howard D. Geller

Beloved husband of Rosa and father of
 Jessica and Jeffrey Geller

Yizkor Donation
 In loving memory by
 Sara Askin

Temple Beth Or The Vine

MISHEBERACH PRAYER

When someone near and dear to us is ill, a spiritual uplift can be very meaningful. This is done in Jewish tradition by reciting a "Misheberach" prayer on the days we take out the Torah.

If you would like a Misheberach said and are not able to attend the service, please call Temple Beth Or's office or email us at TempleBethOrBrick@gmail.com

We need the person's **Hebrew name** and the **mother's Hebrew name**, so that a prayer will be done for you.



MISHEBERACH PRAYER REQUEST

Date: _____

Person Receiving Prayer: _____

Hebrew Name: _____

Mother's Hebrew Name: _____

Reason: _____

From: _____

THE MITZVAH GROUP

Temple Beth Or's Mitzvah Group reaches out to all members. If you know of someone who needs or would like a phone call, hospital, nursing or rehab center visit, please let us know.

Kindly complete the form below and mail it to the synagogue.

Temple Beth Or
Attention: The Mitzvah Group
PO Box 789
Brick, New Jersey 08723

**If time is of the essence, please
phone the information to either:
Rabbi Rubin at 610-639-5341, or to
Mona Sternbach at 848-333-3596.**

You can email Mona Sternbach at
mtsternytbo@gmail.com.

Let us join together in turning our
good intentions into good deeds.

Thank you,
B' Shalom
Mona Sternbach
Chairperson

COMPLETE THIS FORM FOR THE MITZVAH GROUP REQUEST— PLEASE PRINT

Name of person wanting contact: _____

Phone: _____

Address: _____

Town: _____

Please circle type of contact wanted:

Phone Call

In Home Visit

Hospital Visit

Name of Hospital: _____ Town: _____

Nursing & Rehab Center Visit

Name of Center and Town: _____

Your name, if different than above: _____

Temple Beth Or The Vine



JNF Trees for Israel



Name of Donor: _____

Address of Donor: _____

Check if you want to include your address on certificate _____

Phone Number of Donor: _____

Number of Trees @ \$18.00 each: _____

Tree being planted in the name of: _____ In Honor _____ In Memory _____

Tree being planted in the name of: _____ In Honor _____ In Memory _____

Tree being planted in the name of: _____ In Honor _____ In Memory _____

Tree being planted in the name of: _____ In Honor _____ In Memory _____

Send Certificate to: _____

Amount enclosed: \$ _____

Mail to Temple Beth Or, P. O. Box 789, Brick, NJ 08723

Office use only

Date received: _____

Check Number: _____

Cash: _____

cli/6/2022



Purchase your ShopRite Gift Cards at Temple Beth Or !!

Cards are available in \$25, \$50 or \$100.

5% of gift cards purchased goes to Temple Beth Or
at no extra cost to you.

Call Temple Beth Or's office at
732-458-4700
or email us at

TempleBethOrBrick@gmail.com

Please give **us 24 hours notice** so we can have them ready for you to pick up, or we
can also mail them to you if you are unable to get here to pick them up.

**Please assist our fundraising efforts.
Support Temple Beth Or!**



Ways To Give

Celebrate a Simcha, commemorate a loss,
mark a special occasion, or offer a get well.

Strengthen our synagogue by contributing to the General Fund or any of the specific funds indicated below. You can send your check to the Synagogue office specifying the fund you would like to support. A beautiful card will be sent from TBO informing the honorees of the gift you have made in their honor or in memory of a loved one.

| | |
|--------------------------------|---------------|
| General Fund | Discretionary |
| Oneg Sponsorship | \$100. & up |
| Kiddish Sponsorship | \$450. & up |
| Lifetime Seat (when available) | \$500. |
| Sim Shalom Prayer Book | \$36.00 |
| High Holiday Prayer Book | \$25.00 |
| Rabbi Discretionary Fund | Discretionary |
| Aliyah Fund | Discretionary |
| Misheberach Fund | Discretionary |

Sisterhood Fund

| | |
|-----------------|---------------|
| Golden Books | \$3.00/each |
| Flower Fund | Discretionary |
| Chai Chair Fund | \$18.00 |

Plaques

| | | |
|--------------------------------------|--------------------|---------------------|
| Memorial Plaques | \$350.00/member | \$450.00/non-member |
| Memorial Board (includes 2 plaques): | Inquire about cost | |
| Wall of Life Plaques | | |
| 1" x 3" | \$100.00 | |
| 2" x 3" | \$300.00 | |
| 3" x 3" | \$750.00 | |
| 2" x 6" | \$1000.00 | |



You may send or bring a check to the synagogue office. Tributes cannot be officially acknowledged until payment is received. Please contact the office for information regarding Legacy Gifts and opportunities to make larger contributions.

LIFE CYCLE EVENTS

Temple Beth Or is here for you to share your happy occasions, as well as any sad difficult moments, with others and with our community. We appreciate the following donations to help keep Temple Beth Or open and functioning. For the “member” rates, the person or the person’s parent/guardian must be a member of TBO or by an extension of reciprocity, of another congregation. Payment is to be made payable to Temple Beth Or. The arrangements for all of these ceremonies and dates must be approved by the Rabbi and TBO.

BAR/BAT MITZVAH FEE

Includes the option of choosing honorees at the service.

TBO Members - \$875.00

There is no additional charge for the lessons with the Rabbi. If the event is held as part of the Saturday morning Shabbat service, it is expected that the Saturday Kiddush and the Friday night Oneg Shabbat receptions will be sponsored in honor of the occasion (included in the above fee).

AUFRUF TORAH ALIYAH

Includes the option of choosing honorees at the service.

TBO Members - \$100.00

Non-Members - \$150.00

If the event is held as part of the Saturday morning Shabbat service, it is expected that the Kiddush following the service will be sponsored in honor of the occasion.

WEDDING

does not include a Chuppah.

The Rabbi does not have to be the officiant.

TBO Members - \$200.00

Non-members - \$300.00

BABY NAMING TORAH ALIYAH

Includes the option of choosing honorees at the service

TBO Members - \$100.00

Non-members - \$150.00

If the event is held as part of the Saturday morning Shabbat service, it is expected that the Kiddush following the service will be sponsored in honor of the occasion.

FUNERAL

(use of Sanctuary)

The Rabbi does not have to be the officiant.

TBO Members - No Charge

For a Kaddish relative of a TBO Member (parent, spouse, sibling, child) - No Charge

For a Non-member - \$550.00 (to be billed to the funeral director)

Following the funeral, if appropriate, a surviving relative is to be offered a one year courtesy membership or a \$550 credit to a higher priced membership with the welcome invitation to come here to attend services and to say Kaddish.

KADDISH RECITATION

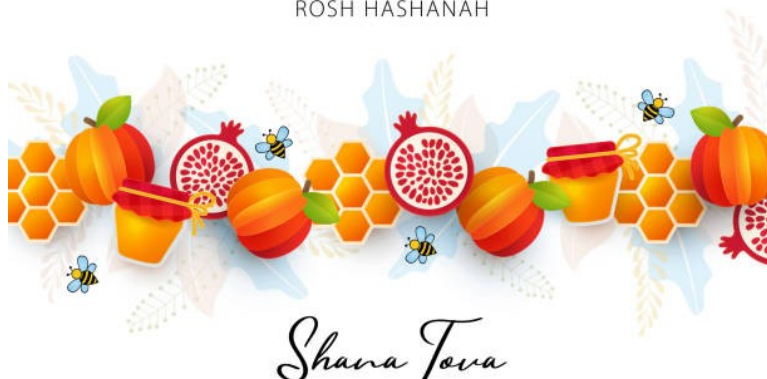
A TBO member or a Kaddish relative of a TBO member who dies is to be remembered and automatically placed on the 11-month Mourner’s List which is read at the time of the recitation of the Mourner’s Kaddish at the end of Shabbat services on Friday nights and Saturday mornings. There is no required donation for this.

A request may be made to add a non-member to the Mourner’s List and have them remembered and included at the time of the recitation of the Mourner’s Kaddish at the end of Shabbat services on Friday nights and Saturday mornings.

A \$300.00 donation is requested for this.

Temple Beth Or The Vine

ROSH HASHANAH



Rosh Hashanah

| | | | | | | | | | | | | | |
|---|---|---|---|---|---|---|---|---|---|---|---|---|---|
| E | E | L | A | P | M | O | L | A | H | S | R | L | S |
| S | W | E | E | T | E | R | M | A | C | H | Z | O | R |
| O | H | E | W | I | H | A | I | B | B | A | R | H | I |
| C | H | A | L | L | A | H | C | E | L | A | A | I | H |
| A | R | P | N | E | R | P | Y | E | A | G | A | I | B |
| O | Y | P | O | M | E | G | R | A | N | A | T | E | I |
| C | K | E | K | A | W | E | Y | R | I | Y | V | I | S |
| Z | B | I | N | A | R | A | E | Y | W | E | N | A | N |
| U | T | L | D | O | A | O | M | T | G | S | P | P | L |
| A | A | U | L | D | H | O | A | W | O | O | Y | R | C |
| L | A | H | R | U | U | Y | L | I | M | A | F | A | D |
| R | R | S | E | A | D | S | P | P | E | F | P | Y | N |
| E | S | H | O | F | A | R | H | A | P | P | L | E | S |
| H | S | T | A | R | T | I | N | G | O | V | E | R | T |

FAMILY
CHALLAH
KIDDUSH
PRAYER
SHOFAR
HONEY
PEACE
NEW YEAR
APPLES
STARTING OVER
MACHZOR
SWEET
POMEGRANATE
SHUL
SHALOM
RABBI

Play this puzzle online at : <https://thewordsearch.com/puzzle/3022/>

